



THE RE/MAX COLLECTION®



4050 Meeting House Mtn Clayton GA 30525

From the white picket fence out front, to the expansive porches and decks, this Cape Cod home affords year-round living inside and out. A landscaped yard is perfect for kids, games and pets, and a refreshing deep-water swim is just one dive off your two-story boathouse. This custom-designed home, on the market for the first time, boasts of spacious rooms, a comfortable floor plan, many windows, and soaring ceilings that make every day cozy, relaxing and memorable. The soaring stone fireplace in the great room, the adjacent dining room, a spacious kitchen with many cabinets, and a sunroom with mountain and lake views make this a great place to chill in the swing with a glass of lemonade.

LIST PRICE
\$1,950,000

GEORGIA MLS
8523647

TYPE
WATERFRONT

SQUARE FEET
3,244

LOT SIZE
.66 ACRES

BEDROOMS
4

BATHROOMS
3

YEAR BUILT
1994

LOCATION
NORTH TIMPSON COVE

GEORGIA POWER CO.
LAKE BURTON



RE/MAX Town & Country

Jon Barnwell
Associate Broker
706.490.0326 (Mobile) 706.960.2304 (Office)
jbarnwell@remax.net
www.lakeburtonrabun.com



Evelyn Heald
Harry Norman Realtors
404.372.5698 (Mobile) 706.212.0228 (Office)
Evelyn.Heald@harrynorman.com
www.luxurylakeandmountain.com



FINE HOMES & LUXURY PROPERTIES

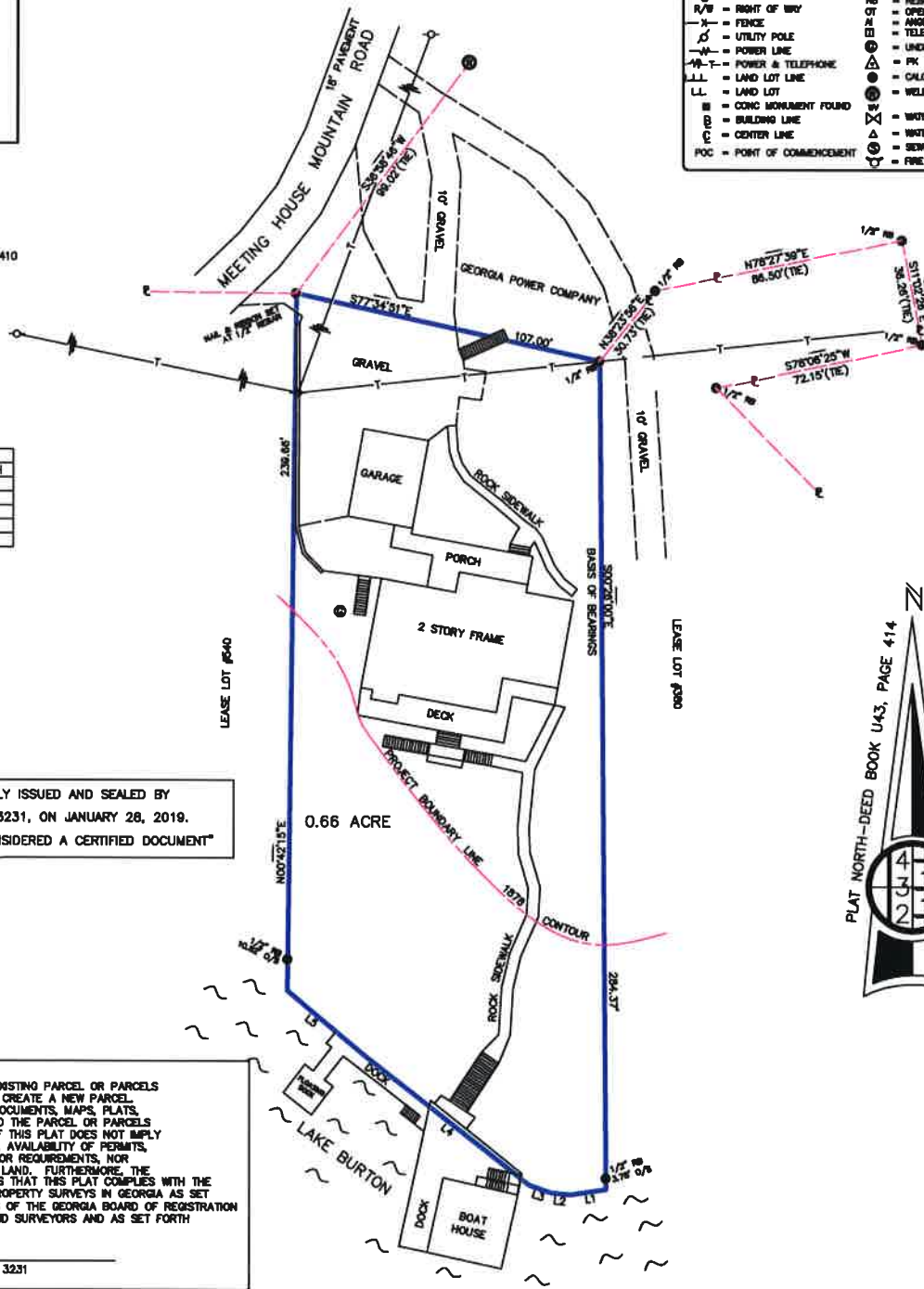
THIS PARCEL IS ZONED YC ACCORDING TO THE OFFICIAL ZONING MAP OF RABUN COUNTY ON FILE IN THE OFFICE OF THE ADMINISTRATIVE OFFICER OF THE RABUN COUNTY ZONING AUTHORITY ON JANUARY 23, 2019

LEGEND			
POB	= POINT OF BEGINNING	O/S	= OFF SET
IP	= IRON PIN FOUND (PP)	D.B.	= DEED BOOK
IP	= IRON PIN SET (PS)	P.B.	= PLAT BOOK
P	= PROPERTY LINE	R	= RANGE
R/W	= RIGHT OF WAY	RE	= REBAR
F	= FENCE	OT	= OPEN TOP
U	= UTILITY POLE	RI	= RING IRON
PL	= POWER LINE	UG	= UNDERGROUND GAS TANK
PT	= POWER & TELEPHONE	PK	= PK NAIL SET
LL	= LAND LOT LINE	CP	= CALCULATED POINT
LL	= LAND LOT	W	= WELL
CM	= CONC MONUMENT FOUND	WV	= WATER VALVE
BL	= BUILDING LINE	WM	= WATER METER
CL	= CENTER LINE	BM	= BENCH MARK
POC	= POINT OF COMMENCEMENT	FD	= FIRE HYDRANT

THIS BLOCK RESERVED FOR THE CLERK OF THE SUPERIOR COURT.

REFERENCE: DEED BOOK U43, PAGE 410

LINE TABLE		
LINE	BEARING	LENGTH
L1	S81°28'13"W	12.32
L2	N84°12'57"W	6.60
L3	N70°38'15"W	6.13
L4	N62°38'09"W	70.22
L5	N50°12'00"W	36.12



THIS DOCUMENT ORIGINALLY ISSUED AND SEALED BY WILLIAM J. ROLADER, RLS 3231, ON JANUARY 28, 2019. THIS MEDIUM SHALL NOT BE CONSIDERED A CERTIFIED DOCUMENT

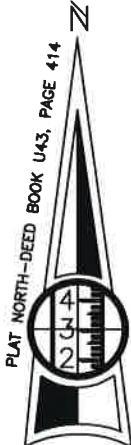
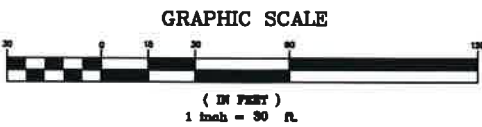
THIS PLAT IS A RETRACEMENT OF AN EXISTING PARCEL OR PARCELS OF LAND AND DOES NOT SUBDIVIDE OR CREATE A NEW PARCEL. THE RECORDING INFORMATION OF THE DOCUMENTS, MAPS, PLATS, OR OTHER INSTRUMENTS WHICH CREATED THE PARCEL OR PARCELS ARE STATED HEREON. RECORDATION OF THIS PLAT DOES NOT IMPLY APPROVAL OF ANY LOCAL JURISDICTION, AVAILABILITY OF PERMITS, COMPLIANCE WITH LOCAL REGULATIONS OR REQUIREMENTS, NOR SUITABILITY FOR ANY PURPOSE OF THE LAND. FURTHERMORE, THE UNDERSIGNED LAND SURVEYOR CERTIFIES THAT THIS PLAT COMPLIES WITH THE MINIMUM TECHNICAL STANDARDS FOR PROPERTY SURVEYS IN GEORGIA AS SET FORTH IN THE RULES AND REGULATIONS OF THE GEORGIA BOARD OF REGISTRATION FOR PROFESSIONAL ENGINEERS AND LAND SURVEYORS AND AS SET FORTH IN O.C.G.A. SECTION 15-6-67.

W. JONATHAN ROLADER RLS 3231

A LEICA TS 08 TOTAL STATION WAS USED TO OBTAIN THE LINEAR AND ANGULAR MEASUREMENTS USED IN THE PREPARATION OF THIS PLAT.

THE FIELD DATA UPON WHICH THIS MAP OR PLAT IS BASED HAS A CLOSURE PRECISION OF ONE FOOT IN 16,396 FEET AND AN ANGULAR ERROR OF 03 PER ANGLE POINT, AND WAS ADJUSTED USING THE LEAST SQUARES RULE METHOD.

THIS MAP OR PLAT HAS BEEN CALCULATED FOR CLOSURE AND IS FOUND TO BE ACCURATE WITHIN ONE FOOT IN 88,173 FEET.



GEORGIA POWER COMPANY
LEASE LOT #2099
LAKE BURTON-AREA 7 #4050 MEETING HOUSE MOUNTAIN ROAD

RETRACEMENT SURVEY FOR
J.W. UNDERWOOD PROPERTIES, LLC

SCALE: 1" = 30'	0.66 ACRE	DRAWN: LQR 1/23/19
DATE: JAN. 23, 2019		C.C. WAR

LOCATED IN LAND LOT 88, 5th LAND DISTRICT
RABUN COUNTY, GEORGIA

APPALACHIAN SURVEYING COMPANY, INC. LSF000282
P.O. BOX 117 MOUNTAIN CITY, GEORGIA 30562 (706)746-2625

DRAWING NUMBER
19-008